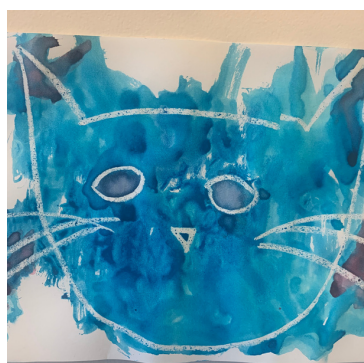


# SOUTHERN NH SERVICES HEAD START EARLY HEAD START ANNUAL REPORT

2022  
-  
2023



*Helping People, Changing Lives.*

# SNHS

**The Community Action Partnership serving  
Hillsborough and Rockingham Counties**

## Program Mission Statement

The mission of our program is to empower families to meet present and future challenges with confidence.

## Program Vision Statement

To form partnerships built on mutual respect to support child and family development and promote lifelong educational success.

## **Program Description**

Southern New Hampshire Services, Inc. (SNHS) Child Development provides Head Start and Early Head Start services for Hillsborough and Rockingham Counties, NH. The program has both rural and urban sites and provides program options including part-day Head Start, Head Start with wrap around child care, center based Early Head Start and home based Early Head Start.

### **Head Start**

**Part Day Head Start** program model provides preschool experiences for children 3 to 5 years of age. It is designed to involve the whole family in a multifaceted approach to literacy and the child's developmental needs. In addition to individual classroom education activities, each child's medical, dental, nutritional, emotional, and social needs are addressed. Typically, the programs hours are 9:00am -1:00pm. Ten (10) part-day classrooms have increased program hours and run 8:30am-2:30pm. Located in Manchester, Nashua, Greenville, Derry, Seabrook, Raymond, and Hillsborough.

**The Head Start with wrap around child care** program model provides child care options before and after the Head Start day to families who are working, in school, or engaged in a job training program. The program has three centers that provide full day services to Head Start eligible families. Each center accepts state scholarship assistance for families of low-income. The program hours are 7:00am-5:00pm and they are located in Nashua, Manchester, and Hillsborough.

### **Early Head Start**

**Early Head Start** serves children birth through 3 years of age in **home based** and **center based** settings. Early Head Start provides services to infants and toddlers, as well as their families. This is a comprehensive program addressing physical health, mental health, social, emotional, and developmental needs. Located in Nashua and Manchester.

## Enrollment Data - Prior Program Year 2021- 2022

The enrollment information is identified below as funded enrollment and cumulative enrollment. Cumulative enrollment is inclusive of all enrollees who received services during the program year. Since the start of the COVID-19 pandemic our enrollment has been low for different reasons and increasing due to staffing vacancies, especially in Early Head Start.

Funded Enrollment	Children
Head Start	400
Early Head Start	108
Cumulative Enrollment	Children
Head Start	298
Early Head Start	72

We estimate that our funded enrollment serves approximately **23.1%** of the income eligible children and families in our service area.

## Average Monthly Enrollment 2021-2022

Head Start - 65%



Early Head Start - 53%



## Family Engagement

Family engagement is a cornerstone of the Head Start and Early Head Start programs. In a typical program year, we provide a variety of opportunities for families to spend time in the classroom, attend family engagement events, learn strategies to support their child's learning and take on leadership roles. The chart on the following page identifies family engagement opportunities provided in the program. The COVID-19 pandemic resulted in changes in our ability to have families freely enter program buildings and volunteer in our classrooms. This continued into the 2021-2022 program year limiting the activities families could do in our centers.

The shaded areas in the chart on the following page reflect the engagement opportunities that we were able to continue through the pandemic with adaptations to meet health and safety protocols.

## Volunteers

For the 3 program years prior to the COVID-19 pandemic we averaged **695** individuals volunteering in our program. Of this number an average of **278** individuals volunteering in the program were current or former Head Start parents/guardians. In **2020-2021** we averaged **157** individuals volunteering in our program. Of those **64** were current or former Head Start parents/guardians.



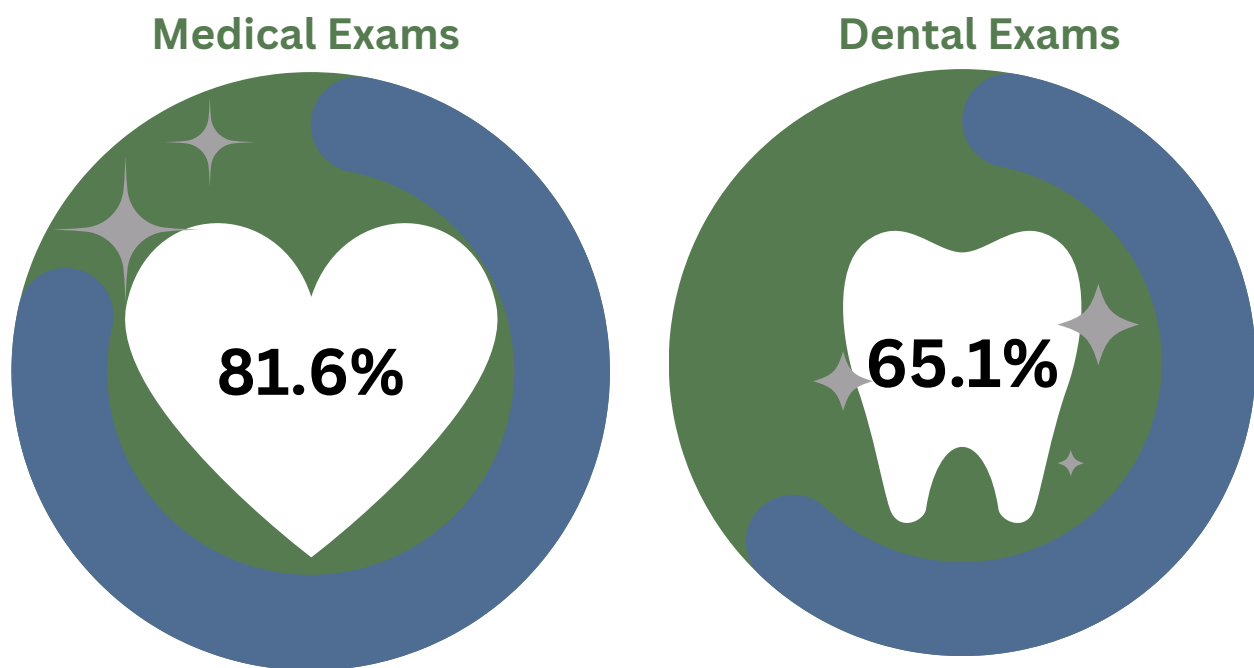
	Family Well-Being	Parent Child Relationship	Lifelong Educators	Family as Learners	Transitions	Connections/ Peers/Comm.	Advocates/ Leaders
Dining with Dudes	X	X				X	
Luncheon with ladies	X	X				X	
Grandparents Tea	X	X					
Harvest Celebrations	X	X					
Home School Connections		X	X	X	X		
Helping Hands			X		X		
Read-A-Thons		X	X				
Classroom Lending Library		X	X	X			
Question of the Day		X	X	X	X		
Night at the Museum		X	X	X		X	
Apple-A-Day	X	X	X	X			
Talk It Up	X	X	X	X			
Positive Solutions for Parenting	X	X	X	X		X	
HB Socializations	X	X	X	X	X	X	
Events	X	X	X	X	X	X	X
Home/Center Visits	X	X	X	X	X	X	X
Policy Council				X		X	X



## Head Start and Early Head Start Medical and Dental Exams

SNHS staff partner with families in helping them establish medical and dental homes for their children to help keep their children up-to-date on their schedule of medical and oral health care. Information is gathered from the parent during enrollment and ongoing through the program year. Staff work in collaboration with the family to obtain necessary documentation from health care providers and oral health care providers to support the individualized needs of the children.

The data below represents the percentage of Head Start and Early Head Start children that received comprehensive medical exams and dental exams for the **2021-2022 program year.**



*Early on in the pandemic, routine physical exams and routine dental visits were canceled across the state. This initial response impacted the number of children who were able to remain up-to-date and stay up-to-date. Our staff have worked to support families with catching-up, but the numbers are still lower than pre-pandemic levels.*

# Community Assessment Summary

The SNHS, Inc. comprehensive community assessment was completed in 2020. The data collected and reported for the comprehensive was largely gathered pre-pandemic. Annually, SNHS, Inc. reviews and updates the community assessment to reflect any significant changes in the community.

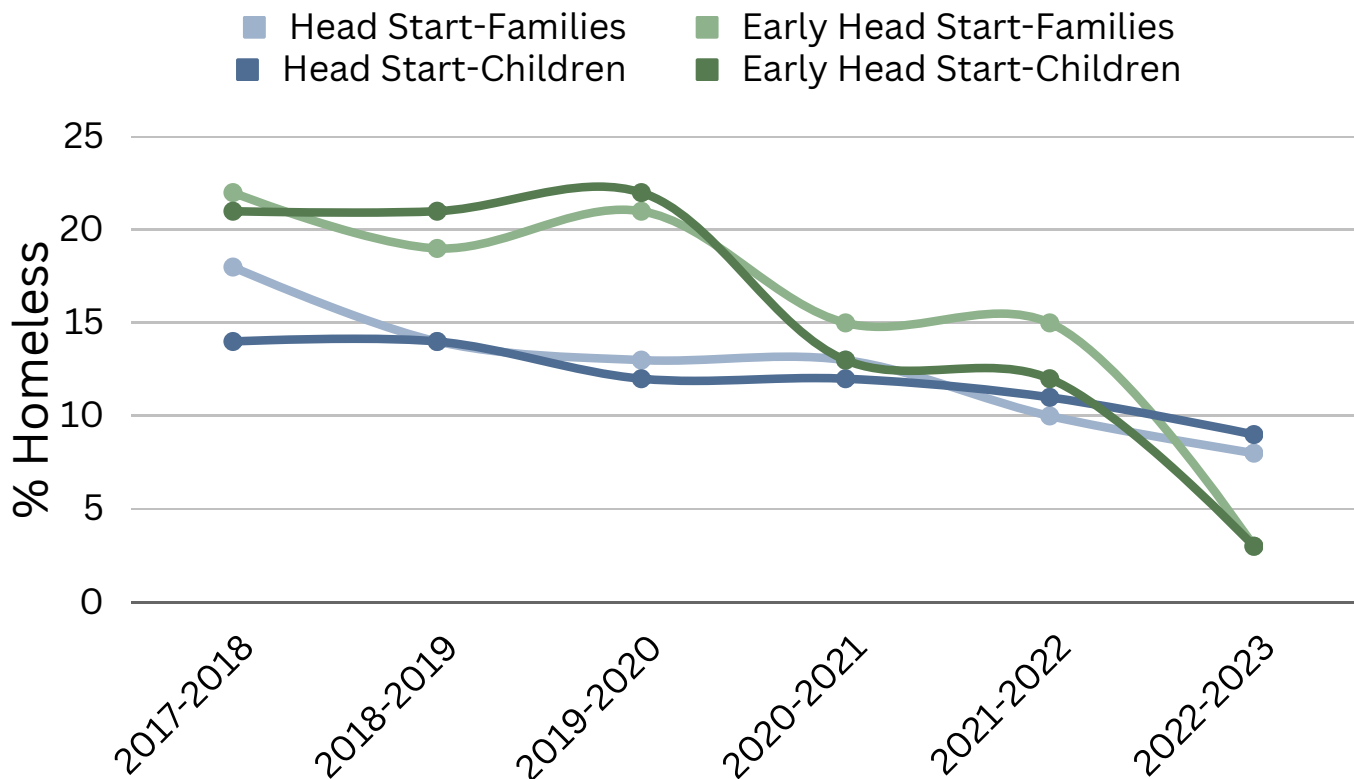
## Availability of publicly funded preschool:

New Hampshire does not fund any public preschool at this time with the exception of classrooms designed to service children who have been identified with educational disabilities.

## Rates of families and children experiencing homelessness:

SNHS, Inc. serves both Hillsborough and Rockingham Counties. The below chart shows the trend for the past 7 years for children enrolled in the SNHS, Inc Head Start/Early Head Start Program.

The State of Homelessness in NH Report 2021 identifies the point in time data count of people experiencing homelessness decreased 11percent from 2020 to 2021, a decrease of 184 people. There were 1,254 people experiencing homelessness in 2021. It is estimated more than half of these were children. Of these, 31.8 percent lived in Manchester and 18.3 percent of them lived in the greater Nashua area, directly impacting the program's service area.



# Community Assessment Summary (Continued)

## Community demographics and resources 2021-2022 program year

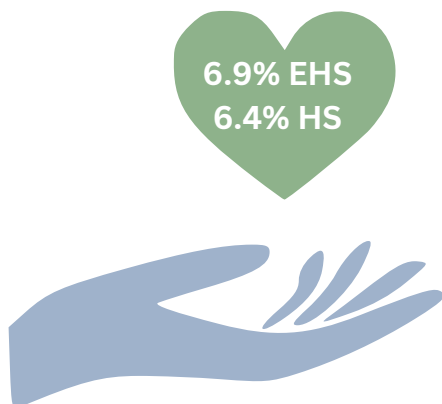
Highest Need for Free/Reduced Lunch in our service area



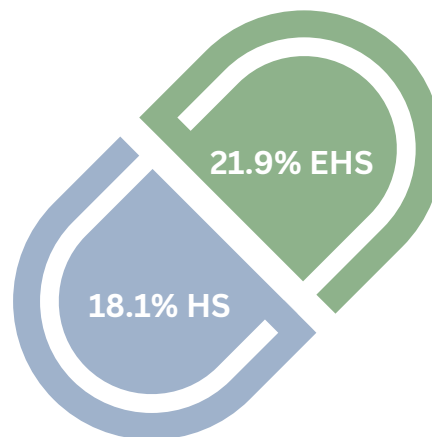
The population of children under the age of five decreased in the communities served except for:



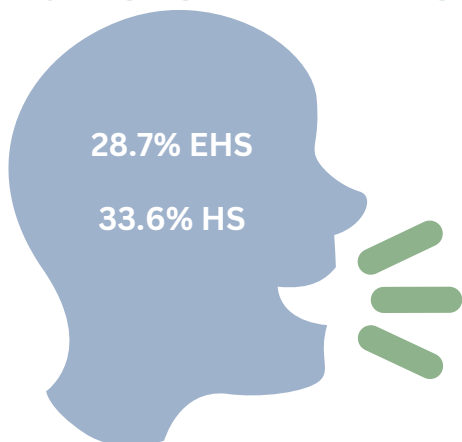
Percent of children living with a relative caregiver or in foster care



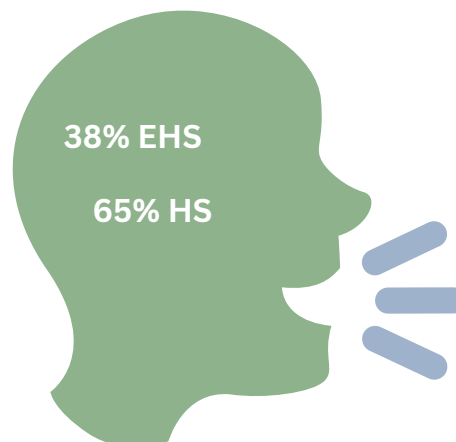
Percent of children from families experiencing a current or past misues of substances



Percent of enrolled children with primary language other than English



Of those, the percent of enrolled children with primary language of Spanish





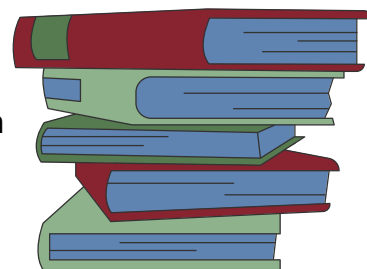
# School Readiness Plan

## READY PROGRAM

Program staff will be focused on providing supports that enable children to be successful in the future through the guidance of school readiness goals, as shown below.

As part of the overarching approach to school readiness we will:

- Ensure the implementation of management systems which sustain high quality services for children and families.
- Help children display the ability to manage their own behaviors and to maintain healthy relationships with others.
- Promote overall child health to support the ability to learn.
- Provide experiences and education for parents to support their role as their child's first and most important teacher.



## READY FAMILIES

Families will be engaged in the long-term, lifelong success of their child. Early Head Start and Head Start recognizes that parents are their children's primary teachers and advocates. Staff will partner with families in establishing school readiness goals and sharing information about their children's progress.

Families can:

- Provide loving and caring relationships that promote healthy social and emotional development.
- Read with children every day.
- Interact frequently with your child each day by talking, asking questions and listening.
- Take children for well child check-ups.
- Provide nutritious meals and opportunities for physical activity.
- Advocate for their children.

## READY SCHOOLS

Early Head Start and Head Start programs work together with local schools and school districts to promote school readiness and to engage families as their children make the transition to Head Start or kindergarten.

Schools will:

- Partner with local education agencies to promote continuity of services and effective transitions to kindergarten and/or other school settings.
- Implement a systematic procedure for transferring, with parental consent, Early Head Start and Head Start program records.
- Partner with families to help each child learn and reach his or her potential.
- Build upon the individual physical, social, emotional and cognitive skills of each child as they prepare to move from Early Head Start to Head Start and then to the public school system.

## READY CHILDREN

School readiness means children possess the skills, knowledge and attitudes necessary for success in school and for later learning and life. This includes all aspects of healthy development, including social, emotional, cognitive and physical development.

## Budgetary Expenditures 2021-2022

Head Start	Early Head Start	Early Head Start Child Care Partnership
<u>Federal Revenue:</u> <b>\$5,548,134</b>	<u>Federal Revenue:</u> <b>\$1,467,834</b>	<u>Federal Revenue:</u> <b>\$0</b>
<u>Nonfederal Share:</u> <b>\$846,656</b>	Nonfederal Share: <b>\$145,541</b>	Nonfederal Share: <b>\$0</b>
<u>Expenditures:</u> Personnel: <b>\$2,784,384</b> Fringe: <b>\$1,541,728</b> Equipment: <b>\$0</b> Supplies: <b>\$198,304</b> Contractual: <b>\$0</b> Other: <b>\$598,239</b> Indirect: <b>\$455,651</b> Training & Technical Assistance: <b>\$59,397</b>	<u>Expenditures:</u> Personnel: <b>\$173,033</b> Fringe: <b>\$363,563</b> Equipment: <b>\$0</b> Supplies: <b>\$37,341</b> Contractual: <b>\$0</b> Other: <b>\$120,5212</b> Indirect: <b>\$117,855</b> Training & Technical Assistance: <b>\$8,762</b>	<u>Expenditures:</u> Personnel: <b>\$29,025</b> Fringe: <b>\$14,651</b> Equipment: <b>\$0</b> Supplies: <b>\$6,065</b> Contractual: <b>\$0</b> Other: <b>\$0</b> Indirect: <b>\$4,525</b> Training & Technical Assistance: <b>\$0</b>
Head Start COVID-19 Supplement	Early Head Start COVID-19 Supplement	Early Head Start Child Care Partnership COVID-19 Supplement
<u>Federal Revenue:</u> <b>\$199,278</b>	Federal Revenue: <b>\$4,523</b>	Federal Revenue: <b>\$4,655</b>
Nonfederal Share: <b>\$0</b>	Nonfederal Share: <b>\$0</b>	Nonfederal Share: <b>\$0</b>
<u>Expenditures:</u> Personnel: <b>\$0</b> Fringe: <b>\$0</b> Equipment: <b>\$0</b> Supplies: <b>\$21,472</b> Contractual: <b>\$0</b> Other: <b>\$3,703</b> Indirect: <b>\$1933</b> Training & Technical Assistance: <b>\$0</b>	<u>Expenditures:</u> Personnel: <b>\$0</b> Fringe: <b>\$0</b> Equipment: <b>\$0</b> Supplies: <b>\$4,149</b> Contractual: <b>\$0</b> Other: <b>\$0</b> Indirect: <b>\$373</b> Training & Technical Assistance: <b>\$0</b>	<u>Expenditures:</u> Personnel: <b>\$0</b> Fringe: <b>\$0</b> Equipment: <b>\$0</b> Supplies: <b>\$4,343</b> Contractual: <b>\$0</b> Other: <b>\$0</b> Indirect: <b>\$312</b> Training & Technical Assistance: <b>\$0</b>

## Federal Review Results

SNHS has had three recent federal reviews with positive results.

See separate attachments.

- Focus Area One (FA1) - November 4, 2019 - November 8, 2019
- CLASS® Observations - March 9, 2020 - March 14, 2020
- Focus Area Two (FA2) - May 24, 2021 - May 28, 2021

---

## Financial Audit

See separate attachment for Southern New Hampshire Services, Inc. and Affiliate  
Single Audit Report Year Ended July 31, 2022.

Independent Auditor's Report on Internal Control over Financial Reporting and on  
Compliance and Other Matters Based on an Audit of Financial Statements  
Performed in Accordance With Government Auditing Standards.

Performed by Leone, McDonnell, & Roberts Professional Association